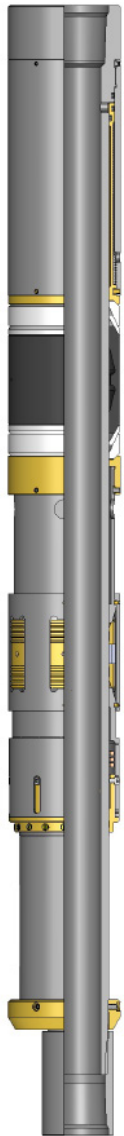
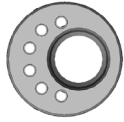




EAGLE
DOWNHOLE SOLUTIONS

"Custom Solutions for your Application"

E-PAK FEED-THRU PACKER ESP2870



Adding Value to Your ESP Completion

The E-Pak Packer has been specifically designed to protect the investment in your wellbore. Protection of your up-hole casing is critical to the longevity of your well, even when running an ESP in tight casing.

The E-pak combines best-in-class anchoring, sealing, and feed-thru technologies to give you the capability to protect your casing while maintaining a fully open tubing ID that allows standard well control techniques to be applied, when necessary.

Advantages

- ID fully open to tubing drift
- Hydraulic set (no pipe manipulation)
- Straight pull release
- 6 feed-thru bypasses
- Cost-effective redress

Specifications

Casing Size:	7" 23-26 lbs/ft
Top Connection:	2 7/8" API EUE 8rd Box
Bottom Connection:	2 7/8" API EUE 8rd Box
Tensile Rating:	170,000 lbs
Shear Release (Straight Pull):	50,000 lbs
Pressure Rating (above):	5,000 psi
Pressure Rating (below)*:	5,000 psi
Temperature Rating:	300°F
Max OD:	5.750" (5.940" for 23-26#)
Tubing ID:	2.381"
Feed-Thru ID:	1/2" (6 places)
Length:	58" (without pup joints)
Setting Pressure:	3,000 psi
Burst of Cylinder:	9,700 psi
Collapse of Cylinder:	7,500 psi

For pressure greater than 1,500 psi: 31,000 lbs. of weight must be added **BELOW packer for each additional 1,000 psi in pressure rating.*

13932 Old Texaco Rd. | Conroe, TX 77302 | www.eagledownhole.com

©Copyright 2009, by Eagle Downhole Solutions, LLC. All rights reserved. Not to be used, transmitted, in any form, or by any means, or copied without prior written permission of Eagle Downhole Solutions, LLC.