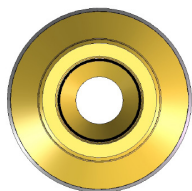




**EAGLE**  
DOWNHOLE SOLUTIONS

*"Custom Solutions for your Application"*

## EAGLE TOP DRIVE CUSHION SUB TDS-500-02



### Protect your Investment with the Eagle Cushion Sub

During rotary drilling operations, there are shock vibration loads which can cause damage to the workstring and power swivel. While stabbing, making up, and breaking out workstring connections, there can be severe loads applied which can cause damage to threaded connections.

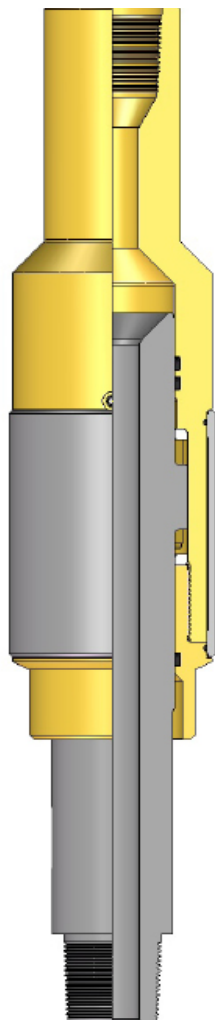
The Eagle Cushion Sub is designed with standard API drill pipe connections, box up and pin down, and is seamlessly integrated into the drill string. The TDS-500-02 provides limited axial movement below the rotary drive, allowing threads of the mating connection to make up without any movement from the rotary head. The allowable movement also decreases the impact on the rotary drive when stabbing connections.

### Advantages

- Saves time and money
- Saves workstring connections
- Prolongs bearing and gear life in the top drive
- High load ratings
- Proven design
- Hassle-free operation

### Specifications

Top Connection:	4 1/2" API I.F. Box
Bottom Connection:	4 1/2" API I.F. Pin
Tensile Rating:	400,000 lbs (S.F.=5.0)
Torque Rating:	30,000 ft-lbs (S.F.=3.0)
Burst Rating:	5,000 psi (S.F.=2.0)
Stroke:	2.50"
Min ID:	2.75"
Max OD:	10.63"
Length:	50.75" (46.25" pin thd 'off')
Shipping Weight:	629 lbs



13932 Old Texaco Rd. | Conroe, TX 77302 | [www.eagledownhole.com](http://www.eagledownhole.com)

©Copyright 2009, by Eagle Downhole Solutions, LLC. All rights reserved. Not to be used, transmitted, in any form, or by any means, or copied without prior written permission of Eagle Downhole Solutions, LLC.